

Project · Reference number

Date

Application

In-ground luminaire with half-sided light sector.
For recessed mounting in compacted surfaces,
paths and places.

An orientation and indication luminaire also for
marking peril points.

Drive-over luminaire for vehicles with pneumatic
tyres.

For pressure load up to 4,000 kg.

At the glass surface the luminaire attains an
operating temperature of 20 °C (measured
according to EN 60598 at an ambient
temperature of t_a 15 °C).

Please note:

Luminaire must not be used for installation in
road lanes, where the fixture is exposed to a
horizontal strain due to braking, acceleration
and change of direction.

Product description

In-ground luminaire **with power supply unit**

Luminaire made of aluminium alloy,
aluminium and stainless steel

Recess housing made of high-strength
aluminium alloy

Optical cylindrical lens made of crystal glass

Silicone gasket

Reflector made of anodised pure aluminium

1 screw cable gland

1,8 m water-resistant connecting cable

H07RN8-F 3 G 1,5² with implemented water
stopper and 1.2 m PVC cable conduit

LED power supply unit

220-240 V \sim 0/50-60 Hz

DC 176-264 V

Safety class I


Protection class IP 67

Dust tight and protection against temporary
immersion

Impact strength IK10

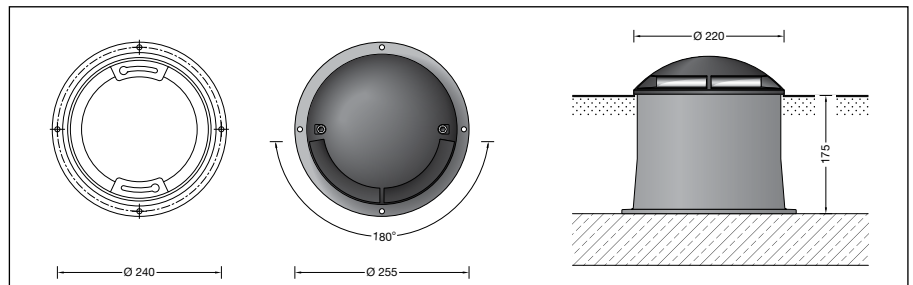
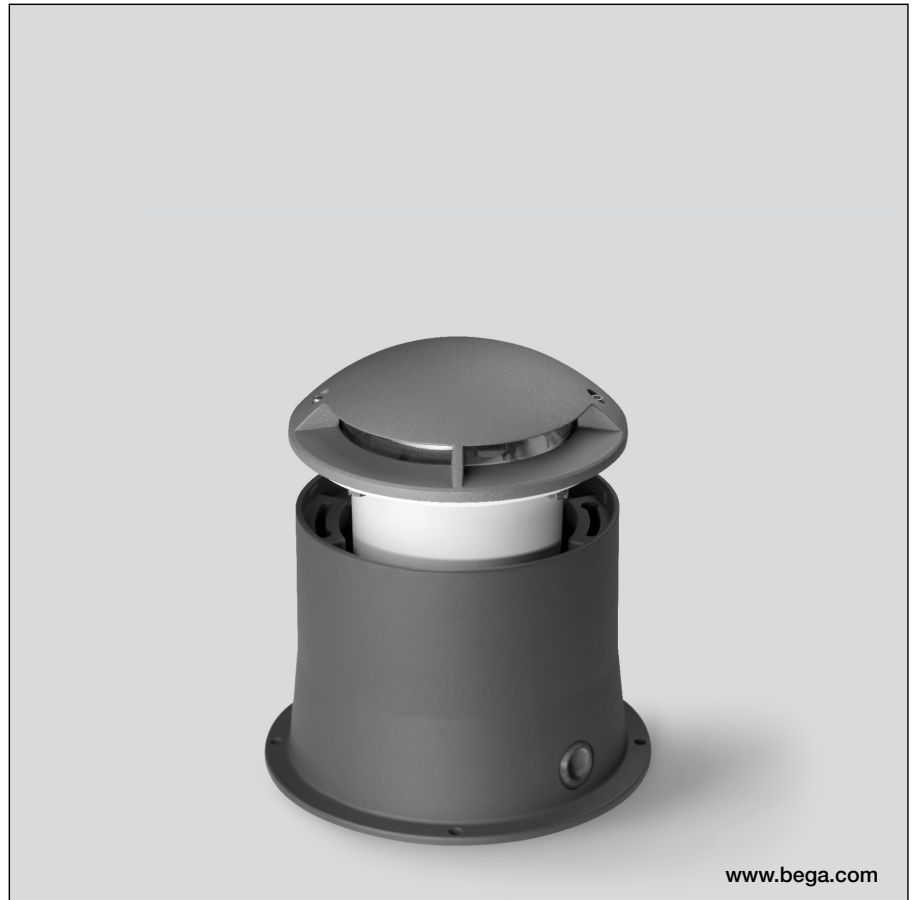
Protection against mechanical

impacts < 20 joule

 - Safety mark

 - Conformity mark

Weight: 5.9 kg

**Lamp**

Module connected wattage	6.7 W
Luminaire connected wattage	8.8 W
Rated temperature	$t_a = 25$ °C
Service life criteria	50 000 h/L ₇₀

88 801

Module designation	3x LED-0240/830
Colour temperature	3000 K
Colour rendering index	$R_a > 80$
Module luminous flux	525 lm
Luminaire luminous flux	46 lm
Luminaire luminous efficiency	5,2 lm/W

88 801 K4

Module designation	3x LED-0240/840
Colour temperature	4000 K
Colour rendering index	$R_a > 80$
Module luminous flux	565 lm
Luminaire luminous flux	55 lm
Luminaire luminous efficiency	6,2 lm/W

Article No. 88 801

Colour temperature 3000 K.
Also available with 4000 K on request.
3000 K – article number
4000 K – article number + **K4**

Accessories**70730** Distribution box

The distribution box is meant for installation in
the soil and allows a junction from the supply
cable to the luminaire and through-wiring to the
next luminaire.

After the electrical connection the distribution
box is filled up with gel and closed.